

# Synod of the Pacific Benefits Service Newsletter



*Keeping a step ahead of your insurance needs...*

## Special Voluntary Benefits for 2009

The Synod of the Pacific's Benefit Service is holding a special **Open Enrollment for its Voluntary Benefits with AFLAC and Reliance Life Insurance**. Open Enrollment runs **now through February 16**, for an effective date of March 1st, 2009.

Voluntary benefits are available to all employees, working 20 or more hours per week for a church or related organization within the Synod of the Pacific, **when that organization secures its Medical or Dental Insurance through the Synod Benefits Service**.

**Any employee wishing to add or make changes to their current Voluntary Benefits enrollment, Now is the time to do so.** Because we are changing Life insurance providers to Reliance, they are offering this one-time special enrollment; In the future, their open-enrollment will be during the Fall, with the rest of the Synod plans.

Reliance enrollment forms must be returned to the Synod office for processing no later than February 16th, to ensure timely processing. If you do not return your forms

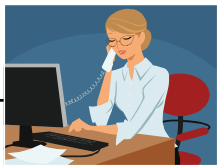
by this date we will not be able to guarantee you access to your benefits on March 1st.

We have two providers for Voluntary Benefits and the details of their offerings are listed below.

If you have any questions, please contact:

Carolyn Linzner or  
Ann Butterfield  
Synod Benefits  
(800) 754-0669  
Fax (707) 765-4467  
200 Kentucky Street, Suite B  
Petaluma, CA 94952  
Email: carolyn@synodpacific.org

We're on the web at:  
[www.synodpacific.org](http://www.synodpacific.org)



### JOIN OUR WEBEX TO HEAR MORE ABOUT THESE PLANS

Tuesday, January 27, 2:00 p.m. pacific time.

Call (866) 469-3239, Meeting number 805 466 533, no password required

Also Join on the Web at <https://heffgroup.webex.com/heffgroup/j.php?ED=103856417&UID=81696042>

Enter your name and e-mail address, no password required, then click "Join Now".

### AFLAC Supplemental Insurance Benefits

The Synod offers seven different protection plans through AFLAC. They are:

- Accident Indemnity Plan
- Cancer Indemnity Plan
- Hospital Confinement Indemnity Plan
- Life Insurance
- Short-term Disability
- Specified Health Event
- Long Term Care

These plans are designed to pay you cash in the event that an accident or health challenge should occur. They will also replace lost income if you are unable to work due to injury or illness. AFLAC pays benefits to individuals who visit the doctor for annual check-ups and screenings.

Your church/organization will be contacted by an AFLAC representative during February. For more information, review the attached flyer and contact the Synod's AFLAC representative:

Greg Kremeliev

(925) 451-4135

Email: gregor\_kremenliev@us.aflac.com

### RELIANCE Term Life Insurance

- Coverage from \$10,000 to \$500,000 for employees and spouses
- Dependent children coverage
- Accelerated Death Benefit
- Waiver of Premium
- Portability
- Guaranteed Issue up to \$50,000

- Age-banded premiums

Reliance Life Insurance is replacing Guardian Life insurance for the Synod of the Pacific. Same rates with great insurance coverage in increments of \$10,000. and improved customer service.

**Enrollment forms are available on the Synod website.**

[www.synodpacific.org](http://www.synodpacific.org)